



NEWS LETTER

SPRING 2013

'SEEK THE COMMON GOOD'

Rushmere mysteries

There are some interesting historic features in Rushmere St Andrew that seem to be shrouded in a bit of mystery. The timber house, known as 'Columbia House', Rushmere Mill and the Old Tollgate on Woodbridge Road near Bent Lane. The Toll Gate and the windmill can both be seen on the adjacent 1928 map.

The most outstanding of these is the fine timber house known as 'Columbia House' shown in the photograph below. The story goes that it was built by local timber merchant John Brown for the Royal Agricultural Show of 1934 as an elaborate gimmick to sell timber.

The then Prince of Wales attended the show and was said to have 'Taken tea in the lounge'. It seems certain that the Prince of Wales attended the 1934 show as there is a record of the visit on the Pathé News.

The story however, goes on to say that after the show, the house was transported to its present location on Playford Road. Just how much truth there is in this



Playford and Woodbridge Roads, circa 1928

I don't know, as I can't find any hard evidence. Just how would one transport a house from the showground to Playford Road? Perhaps it was dismantled in some way, or perhaps the present house is so similar to the original that people of

the time thought it had been transported from the showground. Does anyone know?

Over the road from Columbia House and down Playford Road towards Ipswich is a road called, 'The Mills'.

The 1928 map shows that a windmill existed here and I've once seen a photograph of it in a book of old postcards where it was simply entitled, 'Rushmere Mill' but this seems to be the only record. Who owned the mill? When was it demolished?

At the bottom of Bent Lane where it meets Woodbridge Road, the 1928 map shows, 'Old Tollgate'. There were a number of toll gates and houses around the area but this is the only one shown on the Rushmere St Andrew map.

There doesn't seem to be any sign of it on the ground. Where was it? Which road was the toll road?

If any of our readers have any further information on any of the above then please write to the Assistant Parish Clerk at the address on the back of the news-sheet and we'll publish any letters we receive in the next issue.

Mark Newton

Columbia House, Playford Road, by kind permission of Mrs Frettingham



Explaining your Council Tax for 2013/2014

For the last three years, the Parish Council managed to keep its Precept requirement unchanged at £91,000 per annum.

To identify how much money each household pays, this amount was divided by the 'Total Band D property equivalent' figure which equates to the number of Council Tax Band D properties in the Parish.

With a small number of properties being built each year, this figure increased slightly each year leading to the Band D Council Tax element for Rushmere St Andrew reducing from £36.28 to £36.01 over the three year period.

Interestingly, Suffolk County Council and Suffolk Coastal District Councils took a different approach and decided to keep their B and D figure unchanged over the three years.

In consequence, they actually took more money overall, year on year, due to the increasing number of households!

Normally, the Parish Council formally determines its forthcoming year's Precept in November. However, at the last minute, we were advised not to set a precept at this time due to Government Proposals which would be announced in the Chancellor's Autumn Statement.

After careful consideration at its November meeting, the Parish Council took the decision to review the budget and determine a provisional budget which would lead to a 2013/2014 Precept requirement of £93,000 – a £2,000 increase on the figure for the previous three years.

It was felt this would have a negligible impact on Parishioners with the Band

D element being £36.30 – only two pence more than the 2010/2011 figure. The final decision however would have to be taken at its January meeting.

The Chancellor's Statement came and the overall effect of this was to revise the calculation of the 'Total Band D property equivalent' figure.

For all Parishes, the effect was as follows:-

- An increase due to technical reforms such as the removal of the discount for second homes and the reduction of empty property discounts.
- A reduction due to the Impact of Local Tax Scheme whereby Government had previously funded Council Tax for those people eligible for Council Tax benefits but now would be catered for locally.
- A reduction due to provisions for losses in collection rate.
- A possible reduction for Ministry of Defence properties but fortunately we have none in the Parish.

Under these new rules, a significantly lower figure changed the previously predicted Council Tax figure of £36.30 into £38.53 to continue to raise the £93,000 Precept.

However, the Government acknowledged that the new calculation method could have an impact on Towns and Parishes and paid a grant of around £200,000 to the Collection Authority, Suffolk Coastal District Council, to mitigate the blow.

Initially, thoughts were that this would only be available to Councils who kept their Precepts unchanged – but at the eleventh hour this was changed to an offer based on the 2012/2013 Precept – for us this amounted to £4083.02 solely for reducing the parish council tax element of the council tax charge.

So the January Parish Council meeting came to determine the final Precept figure. The offer of the grant was accepted and no changes were suggested to the overall content of the original £93,000 figure.

However, the day before the meeting, a group of Parishioners had petitioned the Electoral Authority to start an election process for our Councillor vacancy.

With the nil cost option of the Parish Council co-opting a replacement Councillor having defaulted with the calling of an election, Councillors considered the possible costs involved:-

- Zero or one person standing – uncontested election – estimated cost £1,500.
- Two or more persons standing – contested election – estimated cost £4,000.

With this unexpected cost now in the offing, it was reluctantly decided to increase the Precept to a total of £97,000 – a band D Council Tax figure of £38.50 after taking into consideration the Government grant made through Suffolk Coastal District Council.

Whilst acknowledging this unfortunate increase, the overall amount still compares very favourably with Parishes of a broadly urban nature in Suffolk Coastal District.

With Suffolk County Council taking £1,126.53, Police and Crime Commissioner £166.77 and Suffolk Coastal District Council £149.40, the total band D amount within our Parish is £1,481.20.

In comparison, the adjacent Ipswich Borough Council bill is over 8% higher at £1,609.11, a figure no Parish in the Suffolk Coastal area surpasses with figures ranging from £1,442.70 to £1571.78.



CHATSWORTH LADIES CLUB

We meet at Tower Hall in Broadlands Way (near the Water Tower) on Monday evenings at 7.30 pm. We have some excellent Speakers, also Social Evenings to raise money for local charities. There is a Summer and Winter Buffet and a Christmas Dinner is also organised.

The Club is open to Ladies of all ages and the cost is £2.00 per meeting.

Your first visit would be free of charge so do come along to see if you might like to become a Member of Chatsworth Ladies Club or contact Loretta Jessup on 01473 612209.

Photos request

Do you have any photos of areas of the parish that you think would be of interest to others? If so we would be pleased to hear from you. Up to date ones or historical, all are useful. We shall take care of them, and return them to you afterwards.

Of course if you can send them by email that is even more useful, but please remember they must be high resolution in order to reproduce in print. Please contact Jean Potter 723409 or assistantclerk@rushmere-st-andrew.org.uk for more details or with offers of photos.

New Councillor welcomed

In December, Dave Ealham took the difficult decision to relinquish his position as Councillor. Dave served you as Councillor for many years but with increasing business and personal commitments, he felt it timely to take a break. Our thanks go to Dave for his commitment and service to the Parish.

In the interests of democracy, a group of Parishioners took the decision to petition for a by-election to be called to elect a replacement Councillor.

Not unsurprisingly for a by-election, the election on Thursday, 7 March saw a turn-out of 15.92 per cent and the result was as follows:-

Peter Tarling – 287, Bernadette Smith –

255, Michael Gilson – 246.

The result therefore brings the Parish Council back to its full strength of 15 Councillors until May 2015 when all Town, Parish and District Council seats will be up for election.

Peter returns to the Council after losing out to a worthy opponent at the last election. Worthy of note is that, in May this year, Peter will clock up an extremely impressive 30 years of commitment to the Council having served residents previously from July 1981 until May 2011.

Peter needs no introduction, his experience is vast, and it is notable that he has maintained a watching brief in the interim by his strong involvement as

a member of the public via the Cemetery and Allotment Panels.

Whilst noting his long-standing ties and commitment to the Parish Council, it is all the more commendable that, for a long period, he has actually resided 'across the border'. However, it can be a very useful asset to have a critical friend who can peer 'over the garden fence' to keep us in line.

As Sir Alex Ferguson might say, 'at about £5.00 a vote cast, or about 80p per registered elector, he's the Council's highest price signing, but I am sure he'll deliver the goods several times over for Rushmere St Andrew'. On behalf of the Parish Council, a warm welcome back is extended to Peter and we wish him an enjoyable and fruitful time as a Councillor once again.

Cemetery – Headstones, Fees and Extension

Many of you visiting the Parish Council owned Lawn Cemetery during the latter part of 2012 will have noticed the extensive repairs being made to memorial headstones. Following a routine annual test to ensure headstones adhered to recommended safety criteria it was found that many were in need of attention varying from simply re-cementing the headstone and base together (35 in total), to the fitting of a stainless steel tubular backbone inside the stone extending into the base to prevent it from toppling over (116 in total). This is known as a 'ground anchoring' system

In 2004 stonemasons countrywide agreed on common safety practices including the fixing of a 'ground anchor' system for new headstones. This meant that many headstones installed before 2004 became a potential safety hazard when the bonding cement between base and headstone crumbled away. It is thought that the very wet weather over the last two years with lower than average temperatures over the winter had given rise to the large number of bonding failures in our cemetery.

This repair work proved to be an expensive exercise which was carried out by qualified

stonemasons at no cost to the owners of the graves. We shall be carrying out periodic tests on the remaining older headstones, so that as and when they become loose, anchors will be fitted to those too.

Burial and memorial fees for all cemeteries have been rising, but the Parish Council has decided that for 2013 the fees for all cemetery services will remain at 2012 levels.

For persons who have been resident in the parish for at least six months at some point in their lives a greatly reduced fee

is available for burials, urn burials and erection of memorial headstones.

Some of you may have noticed that we are extending the existing cemetery. Why you may say when there seems to be plenty of spare room at present? It takes in the region of five to six years to prepare the ground, landscape the area, and allow time for reasonable growth on the trees, hedging and shrubs, prior to burials commencing in what is hopefully by then a green and pleasant environment.

We have made a start by fencing off the area. Later this year hedging will be planted round the perimeter and then we will be laying driveways and paths and extending the water supply.

After this, trees will be planted with shrub borders and lawn laid and allowed to mature.

Some of the hedging in the existing cemetery has been removed to allow access for contractors.

A temporary gate has been placed in this space for safety reasons, but when the extension is complete it will be removed.

Limes Pond

Since the refurbishment of Limes Pond in the Village commenced last year, we have had many enquiries regarding the return of the fish.

As you will know from a previous issue of this newsletter the fish, mainly goldfish and carp were captured prior to the pond being drained. Goldfish are not really suitable for this type of pond so will not be returned. But the company entrusted with the care of the fish will find other homes for them. In their place other fish more suitable to this environment will be released into the pond shortly.

We politely request that the well-meaning people who persist in releasing donations of goldfish into both this and Chestnut Pond refrain from doing so in the future. These ponds by the nature of the water source are not the correct environment for these fish.

Whilst writing, we have not forgotten the Village sign. The cradle has been installed. The edges of the pond are due to be planted with more natural planting, and when all is complete the village sign, which is being refurbished, will be re-erected.

Orwell Flower Club

Tower Hall, Broadlands Way, Rushmere St Andrew IP4 5SU

Looking for a new interest – why not come to our meetings?

We have a different demonstrator each month who creates six flower arrangements which are raffled at the end of the meeting. There is a sales table with all you need to create your own designs at home

We meet on the fourth Thursday of the month at 7.15 pm except in August and December

Our year starts on 23 May 2013 New members are welcomed

Enquires D Corbett t 01473 623371 e gil.corbett@btinternet.com

Bus services revisions affecting Rushmere

In our Autumn 2012 newsletter, we listed the bus services serving the Parish. Since then, a number of revisions have occurred.

Following the introduction of the new Ipswich Buses service 4 (Ipswich – Broke Hall – Bixley Farm via Felixstowe Road) in September, their ‘temporary’ service 192F (Ipswich Railway Station – Broke Hall – Bixley Farm – Martlesham Heath) reverted back to its former routing via the Orwell Bridge so no longer serves the Parish.

In January, Ipswich Buses service 17 (Ipswich – Ipswich Hospital via Spring Road) was extended to serve Broke Hall and Bixley Farm. A broadly half-hourly service is provided from Monday to Friday from 09:00 until 15:00 in between the bus ‘school run’ duties.

Running via The Street/Playford Road, minor timetable amendments came into effect in April on the infrequent 71/72 services from Ipswich to Orford.

On the Go-Ahead Anglian front, a new service was introduced in December. Service 164 runs from Ipswich Railway Station to Saxmundham via Woodbridge Road East, Kesgrave, Woodbridge, Melton and Wickham Market. Running Monday to Saturday, eight daytime services are provided each way. Minor

timetable revisions were also made to their existing service 165 from Ipswich Railway to Aldeburgh and Anglian therefore provide a roughly half-hourly service along Woodbridge Road.

Individual timetable details can be found through the bus operator web sites. For comprehensive lists of all services please peruse the following websites:-

www.suffolkonboard.com
www.travelineeastanglia.co.uk

or by telephone 0845 606 6171. Please note that these pages are frequently being updated to include new timetables and service change summaries so we would advise that you check this page regularly.

Some really good news is that two new bus stops have been provided by SCC Passenger Transport to breach the long gap between Broadlands Way/Bixley Lane and The Golf. The first is east side of Broadlands Way at Glemham Drive but not in the original place where there is paving and a Parish Council seat! The second is located south side of Foxhall Road between Broadlands Way and Bennetts, near The Golf Hotel.

Latest changes to bus services for Rushmere St Andrew can be found in the table below

Operator	No.	Route	Frequency Mon-Sat	Frequency Sun	Notes
Ipswich Buses	4	Ipswich-Broke Hall-Bixley Farm via Felixstowe Road	Half-hourly daytime service	None	
Ipswich Buses	17	Ipswich-Spring Road-Hospital-Broke Hall-Bixley Farm	Half-hourly Mon-Fri only 0900-1500	None	
First Group	55	Ipswich-Bixley Farm via Foxhall Road	Half-hourly, 2 hourly evenings	2-hourly evenings	Intertwined with 56 to give quarter-hourly /hourly service to Arundel Way
First Group	56	Ipswich-Broke Hall via Foxhall Road	Half-hourly, 2 hourly evenings	2-hourly evenings	Intertwined with 55 to give quarter-hourly /hourly service to Arundel Way
FirstGroup	63	Ipswich-Woodbridge-Framlingham via Woodbridge Road East	7/8 daytime buses each way	None	
FirstGroup	64	Ipswich-Woodbridge-Aldeburgh via Woodbridge Road East	12 daytime buses each way	None	
First Group	64A	Ipswich-Woodbridge-Melton	1 evening service each way	None	Subsidised service
FirstGroup	65	Ipswich-Woodbridge-Rendlesham via Woodbridge Road East	5-8 daytime buses each way	None	
FirstGroup	66	Ipswich Railway Station- Martlesham Heath via Woodbridge Road East & Beech Road	All day service, 2-4 per hour weekdays, 2-3 Saturdays	Half-hourly	
FirstGroup	67	Ipswich Railway Station-Martlesham Heath via Foxhall Road	7 morning eastbound, 7 late afternoon westbound	None	Mondays to Fridays only
PF Travel, Beestons, Carters	71/72	Orford-Ipswich via Playford Road & The Street	Very infrequent service – please refer to timetables	None	SCC Subsidised service
Go-Ahead Anglian	164	Ipswich-Woodbridge-Wickham Market-Saxmundham	8 daytime buses each way		Intertwined with 165 to give half-hourly daytime service
Go-Ahead Anglian	165	Ipswich-Woodbridge-Rendlesham-Leiston-Aldeburgh via Woodbridge Road East	10 daytime buses each way	None	Intertwined with 164 to give half-hourly daytime

A School Governor – taking an interest in youngsters

I was appointed as a Governor at Broke Hall Primary School just over a year ago. Since then, I have been asked on a number of occasions about the purpose and work of School Governing Bodies. I am pleased to have the opportunity to explain this to those of you who may also have asked yourselves the same question.

All schools must have a Governing Body. It is made up of a range of different Governors such as Local Authority, Staff, Parent and Community Governors. The Governing Body is there to help ensure that all pupils are given the best possible education. It supports the work of the Head Teacher and staff and also challenges their expectations. Governors also monitor and evaluate progress towards the school's agreed targets and priorities.

Much of a Governing Body's work is done through working parties and committees, which focus on the various areas of the school's work and report back to at Full Governors Meetings. At Broke Hall School, for example, all Governors are members of the Full Governors and Monitoring and Curriculum Committees and I am also a member of the Premises, Health and Safety Committee.

Many Governors are also linked to a particular subject area or key stage (age group). I am currently linked to Modern Foreign Languages. Governors may also be invited to watch lessons or work with small groups of students, for example to carry out pupil surveys. They are encouraged to attend school functions and to take part in school activities. My last 'activity' was to join the children at the Christmas Lunch, which

was a very enjoyable experience, as I had the opportunity to meet a wide range of staff and children as well as enjoying an excellent meal!

Have you ever thought of becoming a School Governor yourself? As you can see, there is a wide variety of work to do. Governors come from every walk of life and can often bring their own particular expertise.

You may feel that you don't know enough about education to offer your services. Don't worry – Suffolk County Council offers lots of training opportunities and you will also be supported by the Chair of Governors and the school's Head Teacher. Members of staff and other Governors will also be happy to help.

Vacancies in Governing Bodies occur fairly regularly. If you are interested, why not contact the Chair of Governors at your child's school and find out about the current situation? The work is voluntary and you will need to be prepared to put in an amount of time and effort.

However, you will gain an enormous amount of satisfaction and enjoyment from helping the youngsters to become confident and effective learners, to make the best possible progress and to enjoy themselves in the process.

**Mirabel Brown – School Governor
(Broke Hall Community Primary School)**

Time for a walk

Over the winter, a significant amount of planned conservation work has taken place in the Sandlings and Millstream Local Nature Reserve area. Sympathetic clearance of vegetation has led to the opening up of areas giving some very picturesque viewpoints.

Several ponds and the course of the Millstream have re-appeared from the depths of vegetation. Piles of wood and vegetation have been left on site to encourage birds, insects and small animals to co-exist in harmony.

To protect animals and birds from the incursions of man, some natural willow barriers have also been erected – feel free to peer over them but please don't cross over them.

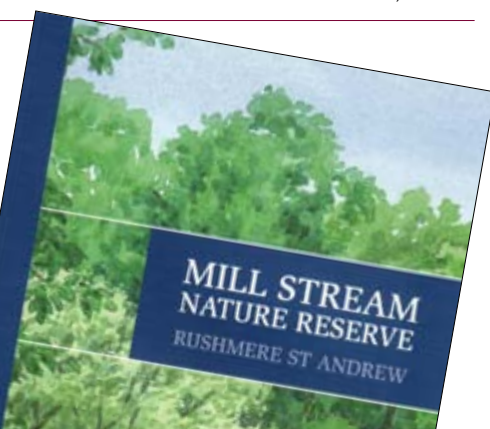
Why not take time to walk around the area before natural growth takes place during the summer and blocks some of the vistas? Indeed why not set an objective to have a meander round the area on a regular basis to see the impact nature has over its annual cycle?

On our website, there are a couple of leaflets you can print off to give you some ideas for your walk:-

www.rushmerestandrew.onesuffolk.net/assets/Uploads/jubilee-walk.pdf

www.rushmerestandrew.onesuffolk.net/assets/Uploads/Millstream-Leaflet.pdf

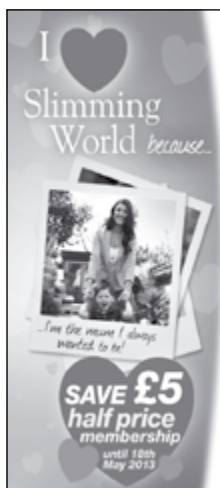
These leaflets are also available in hard copy from the information table in each of the Parish Halls.



ALLOTMENT MANAGER

The Parish Council is looking for someone to fill the currently vacant role of 'Allotment Manager' at our Allotment Gardens in The Street adjacent to Chestnut Pond. The role is entirely voluntary and would ideally suit an existing allotment tenant but is open to any individual with an interest in gardening – sorry we cannot offer you a plot as there is currently a waiting list for any of the 42 allotments to become available.

If you are interested please contact the Clerk Mr M Bentley, 01473 711509 mel.bentley@rushmere-st-andrew.org.uk, for further details of the required involvement in day-to-day running of the Allotment Gardens.



Join a warm and friendly group near you today . . .

Monday 9.30 am
13th Ipswich Sea Scout HQ, Rushmere Road IP4 4JX
(Opp Bramley Chase)

Tuesday 5.30 and 7.30 pm
St John's Primary School, Victory Road IP4 4LE
(off Rushmere Road)

Tel Wendy 01473 631352

0844 897 8000
www.slimmingworld.com



Paws on Patrol

Kesgrave and District Safer Neighbourhood Team

On the 20 October 2012 our new initiative 'Paws on Patrol' was launched.

Think of it as a Neighbourhood Watch Scheme but for dog owners (without the meetings!)

The idea behind paws on Patrol is that Dog Owners in general will be out with their dogs most days and therefore are far more likely to witness crime, anti-social behaviour or anything suspicious in their area. We are therefore asking that should you witness such incidents, you report these to us, and where necessary gather information. At no time do we expect you to intervene in any incident. Our new non-emergency number is 101 and such incidents can be reported this way, only use 999 if an emergency. Alternatively you can contact us via our email address:

pawsonpatrolkesgrave@suffolk.pnn.police.uk

For all Dog Owners that register with us you will be given a registration pack, this will include all the necessary information and telephone numbers you will require.

Help us by joining, email your contact details at the above address today.

PCSO 3241 Sally Thomas

Kesgrave and District Safer Neighbourhood Team Telephone: 101
(Near to Tesco – Ropes Drive, Kesgrave)

'The Fast and The Curious'

Perhaps the best quote I have ever heard is 'Better to be late in this world than early into the next'. So good is it in fact, that I frequently quote it to motorists who I have stopped for speeding offences.

I conduct many speed checks in Rushmere St Andrew and I am often left



astounded, not just by the excess speed, but by the bizarre excuses given by those I stop.

I have heard everything from 'I'm late to a party', to 'I've got groceries in the car'. Amusing it may be, but excuses like this are simply a cover for them having not paid attention to the road.

Speeding is an offence, and no magistrate is going to accept that it was all done in the interests of hearing a Rihanna song or saving a box of Fish Fingers!

Recently a mobile speed camera van began conducting speed checks in Playford Road, and it has already identified over 100 speeding offences.

These motorists are now faced with considerable fines and the possibility of points on their driving licences, which will of course raise their motoring insurance costs for several years to come.

Whilst the driver is at the roadside receiving a £60 fine, other checks are done.

For example does the driver have a valid driving licence for that category of vehicle? Is the driver insured to drive that particular vehicle? Is it taxed with a current MOT certificate? Are the tyres in a legal and roadworthy condition?

The Kesgrave and District SNT will soon be conducting daylong speed enforcements in several areas, and many officers will be taking part.

Excuses will no doubt be many, but so will the number of Fixed Penalty Notices being issued.

One of the SNTs current priorities is speeding enforcement, and your priority when behind the wheel must be to avoid doing it.

PCSO 3194 Mike Sarbutts

Kesgrave and District Safer Neighbourhood Team

Tel. 101 (Non-emergency number)
michael.sarbutts@suffolk.pnn.police.uk

Annual Parish Meeting

with a difference !

Wednesday 22 May 7 pm at the Village Hall in Humber Doucy Lane

Come and join us to find out some of what goes on in your parish.

We hope that Groups in the parish and those using the parish halls will be mounting displays and talking about their activities. They include a Country Market, WI, Keep Fit Activities, Yoga, Ballroom, Scottish and Square Dancing, Art Classes, Crafts of all descriptions, Talks of interest, Camera Club, and much more . . .

There will also be a short talk and photos from the owner of Oak Tree Low Carbon Farm in Playford Lane.

The Police Safer Neighbourhood Team will be represented and will have home security devices for sale on the night (including the new alarmed padlocks for sheds/outbuildings)

Refreshments and opportunity to talk informally to people and councillors.

It is your parish and we need your input to make it work!

If you are a group or organisation interested in promoting your work at this event please contact Jean Potter 01473 723409 or email assistantclerk@rushmere-st-andrew.org.uk



SWEAT THE ALPHABET & DANCE THE DIGITS

IF YOU CAN SPELL - YOU CAN BOKWA!

**Thursday's 9.30-10.15 am, Tower Hall
5 Broadlands Way, Rushmere St Andrew IP4 5SU
£3.50 per person - just turn up!**



Welcome to the new fitness dance workout - BOKWA. It is easy to follow and is suitable for all fitness levels and ages. It uses signs to walk out letters, digits and symbols creating an aerobic-dance routine

**EMMA LOUISE SPALL
AEROBICS & FITNESS INSTRUCTOR
TEL: 07786656208 www.emmalouisespall.weebly.com**

Maintenance of the hedgerows in the parish

As winter passes into spring our hedgerows begin to take on the form of shooting buds and blossom. With longer daylight hours and the sun (we hope!) higher in the sky, nature wakes up. This winter has seen more snow than for a long time as well as continuous spells of cold weather made worse by biting cold winds.

It's no surprise then to see the birds hunting for any morsel of food with hedgerows being great providers.

A healthy, well managed, hedgerow supports a large number of bird species, butterflies and countless other insects. Hedgerows provide support and cover for small mammals and amphibians.

For several species of birds the berries found in our hedgerows have been a lifeline of sustenance this winter.

A large feeding flock of Goldfinches gathered to feed in the Elm hedge which leads to the Water Tower with numbers swelling to between 60 and 80 birds over the course of two or three of the coldest days.

Dotted amongst the Goldfinches were a handful of Siskins and Redpolls. Whilst the Goldfinches are year round favourites, Siskins and Redpolls are very much winter visitors. As well as feeding in the hedgerows the Siskins will take to garden bird feeding tables with their favourite food of Sunflower Hearts and Niger Seed.

The Siskins are feisty little birds and will attempt to see-off any other species that tries to perch on the feeders whilst they are there! In all more than 30 species of birds can be seen in or near the Parish hedgerows with 20 or so species in and around many of our gardens.

With this in mind it is essential that the local hedgerows are maintained in good order. Suffolk Coastal District Council (SCDC), supported by ourselves (Rushmere St Andrew Parish Council), Greenways and their band of volunteers all work to maintain and protect these hedges.

In the past few weeks SCDC have begun a programme of re-cultivation of the Elm Hedge leading to the Water Tower from Bixley Drive. Next winter a further section will be coppiced to encourage new growth and reduce the ravages of Dutch Elm Disease.

Regular safety checks are made by SCDC and should any individual trees which form part of the hedgerow prove to be at risk then they will be dealt with.

We have had several issues in connection with the hedgerow which borders the rear of properties in Butterfly Gardens

and Sandlings Crescent. All the residents have been informed that SCDC is 'in charge' and will maintain the hedge throughout the year with, of course, the majority of the work being carried out in the Autumn and Winter.

However, as a result of some residents 'manicuring' sections of the hedge to suit their own ends and other sections being overgrown and 'contaminated' with feral domestic plants the whole thing now looks a bit sorry and 'hotch-potch'.

We are therefore considering drastic action to recover this hedge as a true wildlife conservation hedgerow.

This would entail coppicing the entire hedgerow down to a couple of feet or so.

This would be a winter project which would be undertaken over the course of two or three days by a team of volunteers working under the direction of the SCDC Countryside Rangers.

The challenge for all us local residents would then be to protect the regrowth so that within a couple of years we should have a strong and healthy hedge developing.

Once again we will have a wide based thick hedgerow consisting of a variety of species producing berries each autumn.

In fairness to those residents whose properties back onto this hedgerow, SCDC would then look to maintain an optimum height of approximately eight feet so that the hedge just tops over the boundary fence height.

Whilst the regrowth is developing, protection will be in place however, the greatest protectors will be the local residents.

In turn this would clearly mean no more 'self-help' and anyone who attempts to cut or trim the hedge is reminded that the hedgerow is the private property of SCDC. Throughout the bird nesting season (March to September) they could face prosecution under the Wildlife and Countryside Act.

Last year there were a few such incidents. We are now more 'clued up' about gathering evidence for possible prosecution. This is also the situation with all the hedges that form a vital part of the Sandlings Local Nature Reserve.

The SCDC Countryside Rangers Team can be contacted via Peter Ross on 01394 444619.

James Wright (Rushmere St Andrew Parish Council Tree Warden) 01473 721499.

MARTIN COLBERT PHOTOGRAPHY

FAMILY STUDIO PORTRAITS AT TOWER HALL



WWW.MARTINCOLBERTPHOTOGRAPHY.COM

0777 765 3469

IPSWICH LADIES BOWLS CLUB

LANSDOWN ROAD IPSWICH IP4 5AZ

Come and join us for a game of bowls each weekday
afternoon 2.00-5.30 pm commencing 25 April 2013

We are a friendly all ladies club, playing games against local bowls clubs, club competitions and drives where the general public are welcomed to join us for a game followed by tea and cakes

NEW MEMBERS WELCOME

Contact Jean Gorrige on 01394 273398 for further information

RUSHMERE ST ANDREW PARISH COUNCIL

Parish Councillors and Officers

Mrs M Brown	15 Chestnut Close, IP5 1ED	01473 725720
Mrs J Clarke	734 Foxhall Road, IP4 5TE	01473 430226
Miss A Cracknell	148 The Street, IP5 1DH	01473 719746
Mr D J Francis	14 Clovelly Close, IP4 5UF	01473 723453
Mr G W Laing	6 Butterfly Gardens, IP4 5TF	01473 725841
Mr M Newton	11 Chestnut Close, IP5 1ED	07899 011098
Mr R F Nunn	835 Foxhall Road, IP4 5TJ	01473 320433
Mr P M Richings (Chairman)	29 The Pastures, IP4 5UQ	01473 436688
Mr S G Skinner	21 The Pastures, IP4 5UQ	07787 893131
Mr M Sones	18 Brendon Drive IP5 1NJ	01473 625511
Mr P T Tarling	7 West Lawn IP4 3LJ	01473 422381
Mr B Ward	12 Playford Road, IP4 5RH	01473 622272
Mr R E Whiting	105 Playford Road, IP4 5RQ	07833 441347
Mr J Withey (Vice-Chairman)	8 Newby Drive, IP4 5UY	01473 273471
Mr J Wright	5 Butterfly Gardens, IP4 5TF	01473 721499

Clerk to the Parish Council and Responsible Financial Officer

Mr M R Bentley
PO Box 456, Rushmere St Andrew, IP4 5WH 01473 711509
Parish Council email: mel.bentley@rushmere-st-andrew.org.uk

Assistant Clerk

Mrs J Potter
21A Claverton Way, Rushmere St Andrew, IP4 5XE 01473 723409
Email: assistantclerk@rushmere-st-andrew.org.uk

Web site www.rushmerestandrew.onesuffolk.net

Registrar to the Burial Authority

Mr A Duncan 8 Crofton Close, Ipswich, IP4 4QR 01473 727389

Advertising enquiries Mrs Jean Potter, Assistant Clerk, see above

Kesgrave and District Safer Neighbourhood Team

To speak with an Officer at the above SNT – telephone 101
Email: kesgrave.snt@suffolk.pnn.police.uk
Write to: Suffolk Constabulary, Kesgrave and District Safer Neighbourhood Team, c/o Kesgrave Town Council Office, Ferguson Way, Kesgrave. IP5 2FZ

For further information about Safer Neighbourhood Team's (SNT) including Team Members; Priorities; Campaigns and Meetings, please choose the following link www.onesuffolk.co.uk/safersuffolk

Email circulation

In an effort to keep residents better informed of Parish Council meetings and matters of community interest raised by our partners (County and District Councils and Police) we aim to set up an email news distribution for anyone who is interested in receiving information direct from the Parish Council.

We are limited by space in the amount of information we can put on the parish noticeboards and whilst we do have our very informative website many people are often too busy to regularly inspect those pages. So if you would be interested in receiving agendas and other information from time to time, direct to your inbox, please send an email to news@rushmere-st-andrew.org.uk with 'Add Contact' in the subject box and nothing in the message space.

You will receive an automated reply and be added to the mailing distribution list. Reminder – the Parish Website is at www.rushmerestandrew.onesuffolk.net

News-Bites

Road Naming – The developer of the ten new homes under construction at Rushmere Sports Club has announced that it will be adopting the Parish Council suggestion for the naming of the new road created by the work. It will be called Eaton Place. The PC felt this to be an appropriate name in honour of the late Alan Eaton, the Clerk to the Council for over 30 years and who was born and lived his whole life in the same house in Humber Doucy Lane (originally in the Parish).

Chestnut Pond – Suffolk County Council Highways Department has finally agreed that there is a problem with the twin drainage pipes (Installed in November 2011) to take excess water away from Chestnut Pond. The pipes should allow water to soak away in the sandier soil deep below Mr Fenton's field at the rear of the pond. Repairs are expected to take place in several weeks' time. We can but hope this work will restore the pond to its correct water level! The Parish Council would like to thank Mr Bruce Goudy who undertook some exploratory digging in the field.

Forthcoming Parish Council Meetings

All of the meetings listed are open to members of the public, and agendas are published on the notice boards around the parish and on our web site.

Annual Parish Meeting Wednesday 22 May 2013 7.00 pm Village Hall

Full Parish Council

Thursday 9 May 2013 7.30 pm Tower Hall
Thursday 11 July 2013 7.30 pm Village Hall
Thursday 12 September 2013 7.30 pm Village Hall

General Purposes and Finance Committee

Thursday 13 June 2013 7.30 pm Tower Hall
Thursday 8 August 2013 7.30 pm Tower Hall
Thursday 17 October 2013 7.30 pm Tower Hall

Parish Amenities and Services Committee

Thursday 20 June 2013 7.30 pm Tower Hall
Thursday 15 August 2013 7.30 pm Tower Hall
Thursday 10 October 2013 7.30 pm Tower Hall

Planning and Development Committee

These meetings are arranged as and when we receive planning applications for discussion. Notice of meetings and agendas will be placed on notice boards and web site.